

Distributed in U.K. by
ANCO SOFTWARE LTD.,
7 Millside Industrial Estate,
Lawson Road,
Dartford. Kent.
Tel: 0322 287782

This product is guaranteed by the
publisher. In case of difficulty,
please contact the distributor.

<http://www.replacementdocs.com>

PRINTED IN JAPAN



Licensed to  **IMAGINEER Co., LTD**
Innovation Through Human Network





THIS SEAL IS YOUR ASSURANCE THAT NINTENDO® HAS REVIEWED THIS PRODUCT AND THAT IT HAS MET OUR STANDARDS FOR EXCELLENCE IN WORKMANSHIP, RELIABILITY AND ENTERTAINMENT VALUE. ALWAYS LOOK FOR THIS SEAL WHEN BUYING GAMES AND ACCESSORIES TO ENSURE COMPLETE COMPATIBILITY WITH YOUR NINTENDO ENTERTAINMENT SYSTEM™

Nintendo and Nintendo Entertainment System are trademarks of Nintendo.

© 1991 DAVID BRABEN & IAN BELL

Licensed to
IMAGINEER Co., LTD
Innovation Through Human Network

2-7-1 NISHI-SHINJUKU 15TH FL., SHINJUKU-KU, TOKYO 163, JAPAN
 TEL: 03 (3343) 8911, FAX: 03 (3343) 8915

LICENSED BY NINTENDO®
 FOR PLAY ON THE



SPACE FLIGHT TRAINING MANUAL

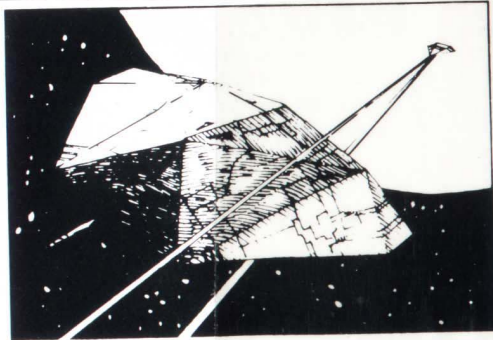


Contents

Introduction	2
Control System	3
Getting Started	4
A Trial Run in your Cobra Mk III	5
Storing your Position	9
Buying Extra Ship Equipment	10
Advanced Combat	11
Advanced Interstellar Navigation	14
Interstellar Trading	15
Other Controls	16
Observers Guide to Ships in Service	17

Introduction

Congratulations for purchasing this Faulcon de Lacy Cobra Mk III fast space trading and combat craft. This flight manual supplied with the craft is designed to familiarise you with all the aspects of space flight, combat and trading provided by the advanced systems aboard your new ship, and we hope you enjoy it.



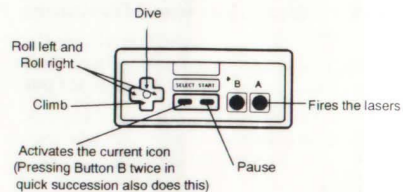
Your Cobra Mk III comes with a single pulse laser, three homing missiles and fore and aft shields fitted as standard equipment. Many extras are available for the Cobra, which you can pay for from the profits you make while trading. Alternatively, Cobras are ideal for bounty hunting (collecting bounty by hunting down pirates), and sadly are occasionally used by some unscrupulous pilots for piracy.

The craft is approved by the Elite federation of pilots. They are a group known throughout the eight galaxies for their expertise in space combat. Your ship-board computer will tell you your official combat rating according to the Elite federation. This starts as "Harmless" and progresses all the way to "Elite". Becoming "Elite" shows acceptance in to the Elite federation itself, the dream of pilots everywhere.

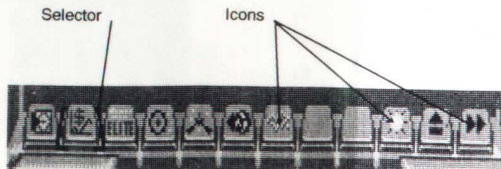
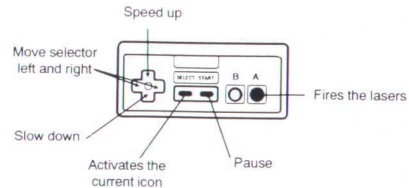
Control System

The Cobra Mk III is of course equipped for the highest G-forces experienced during combat, so it comes with the latest in control systems which can operate the ship entirely from the main Slouch-o-matic acceleration couch. The controller does different things if button B is pressed:

When Button B is not pressed:



When Button B is pressed:



The Selector square (left) is used to select icons by moving it over them. To activate the icon press SELECT.

Sometimes an icon will appear blank. This happens when a function is not available. For instance the "Missile" icon does not show when you have no missiles left.

Getting Started

Once you have turned on the power to your Cobra Mk III, your main display should first show the logo of the Elite Pilots Federation (shown on the right), to show they have approved the quality of construction of your craft. Press START when you are ready. The screen will then show a succession of different space craft, for recognition practice. This is what your ship's computer displays when it is idle.

Your Cobra Mk III has a facility to simulate practice combat sessions. This is engaged by pressing START on the controller. After a short message, combat begins with your Cobra Mk III fitted with a beam laser and three homing missiles pitted against three poorly equipped craft, each with a pulse laser.

If you would to try this practice combat straight away, press START. Your ship-board computer will time these sessions, and tell you how long you took to destroy all three enemy craft. You can use missiles if you like (see "Advanced Combat"), but there is a sixty second penalty on the time for each missile used.

More experienced pilots may pass through this by pressing SELECT on their controller.

Start-Up Screen



Space craft Recognition



Practice Combat Mode



A Trial Run in your Cobra Mk III

New pilots are expected to go on a relatively safe run to test out their Cobra Mk III, and to familiarise themselves with the controls. The recommended run from the Faulcon de Lacy shipyards orbiting Lave is the 5.6 light years to the Corporate State of Zaonce, where there is little or no piracy.

Lave is an agricultural world, so food and textiles are quite cheap. It is recommended to take some cargo on this run, otherwise you are not fully testing the Cobra. Take all the food available, and fill up to maximum (20 tonnes) with textiles.

Buying Some Cargo

To do this, use the selector square to select the "Stock Market" icon and activate it. This shows a list of all of the trade items available on Lave. The current amount of each item in your cargo bay is shown in the right hand column.

Now buy 16 units of food by holding down the RIGHT button. The display now shows 16 tonnes of food at the top of the right-most column, and a dash in the column to its left to show there is no more left. Move down one row and buy 4 tonnes of textiles. You can see whats in the cargo bay by activating the "Inventory" icon.

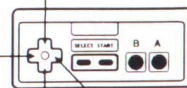
Status Display for Commander Jameson



Stock Market Icon Inventory Icon

Move up one item

Sell



Move down one item

Buy

Launching from the Space Station

Now select the "Launch" icon, and activate it. You will briefly see the force shield at the entrance to the space station as you are launched out into space. Then you will see the planet Lave rotating below. The Cobra Mk III is not equipped to enter a planet's atmosphere, because the weight of shielding required would make it too slow for combat. This is why all trading is done at the space station. Press UP or DOWN until the planet is no longer on the view screen. This is to make sure you do not hit it while you are preparing for a hyperspace jump!

Using the Local Map

Now select the "Map" icon, and activate it. This shows the positions of the nearby star systems, with Lave in the centre. The ring shows the distance your Cobra Mk III can travel using the amount of fuel you currently have aboard. Use the controller to move the small cross over the Zaonce system, then activate the "Data on System" icon (it should already be selected). This display shows information on Zaonce from the archives of your Cobra Mk III. Activate the "Map" icon again when you are ready.



Launch Icon

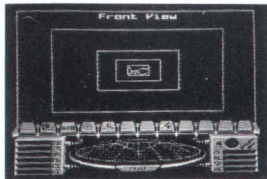


Map Icon

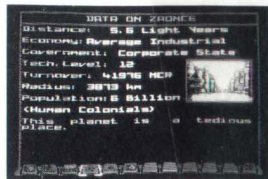


Data on System Icon

Your view after Launching



The Local Map



Making a Hyperspace jump

Now select and activate the "Front View" icon, then select and activate the "Hyperspace" icon. This shows a count-down while your hyperdrive engines charge up for the jump through hyperspace. After the jump, you are in the Zaonce system.

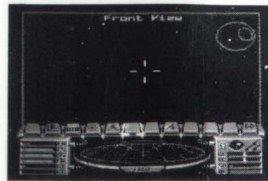
Now the riskiest part - piloting your Cobra to a space station. Zaonce is one of the safest systems, so you are unlikely to be attacked.

Finding the Planet

Use the compass (see picture) to point your Cobra towards the planet. To do this, turn until the solid green dot shows on the compass. If you can see a hollow dot then turn around. Now turn the ship until the dot is in the centre of the compass, when the planet should be visible on the main screen. Point your craft directly at it, and accelerate to full speed (see "Control System" on page 3 if you have forgotten how to do this).

Now select and activate the "Fast Forward" icon. This skips through until something happens. Keep activating it until the icon disappears. This means a further skip would have taken you too near the planet, or you are being attacked. If attacked, then do your best to destroy the attackers. This will be quite hard, as you have no extra weapons.

The view after Hyperspace



Hyperspace Icon

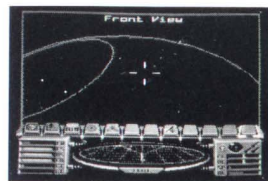


Front View Icon



Fast Forward Icon

Once you have arrived at the Planet



The Compass



Right



Wrong

Finding a Space Station and Docking

You should now be quite near to one of the space stations orbiting the planet Zaonce. When your scanner detects one, the "Docking Computer" icon should appear. Using the Docking Computer will cost you five credits. It is safest for you to use it on your first trip, since manual docking is very hard, so select and activate this icon.

If you don't want to watch the docking, use the "Fast Forward" icon, which will take you directly into the space station.

If you would like to try manual docking, then you must line the Cobra up with the slot on the front of the space station, and match your ship's roll to it while you fly through the slot. If you are going slowly enough then your shields will resist any minor impacts, and you will dock safely. If you are unsure, watch the Docking Computer before trying it yourself.

You are now safely docked at Zaonce, so select the "Stock Market" icon and sell all your cargo. The prices on the Stock Market fluctuate between visits, but you should now have over 150 Credits cash. Quite a profit for your first mission!

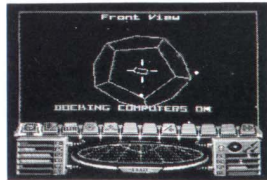
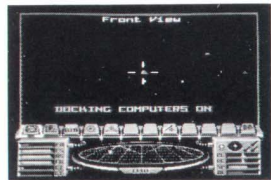


Docking Computer
Icon



Fast Forward Icon

Docking



Zaonce Market Prices

ZAONCE MARKET PRICES			
PRODUCT	UNIT PRICE	QUANTITY	STOCK
Blank Tape	4.00	25	150
Blank Disk	1.50	50	300
Blank Drum	3.00	25	150
Blank Cass	1.00	100	500
Blank Reel	2.00	50	250
Blank Print	5.00	20	100
Blank Film	10.00	10	50
Blank Paper	0.50	200	1000
Blank Card	0.20	500	2500
Blank Label	0.10	1000	5000
Blank Envelope	0.05	2000	10000
Cash:	18.4	Cr	

Storing your Position

It is sensible to store this position, so you can come back to it later. To do this, select and activate the "Stored Positions" icon (You may only store positions while docked). The commmander starts with the name "Jameson" but this can be changed.

To change the name select and activate the "Change Name" icon. Use UP or DOWN on the controller to select the first letter of the name you want. Then press RIGHT and do the next letter. If you make a mistake press LEFT and try again. Press button A once you have done the last letter.

Now store your commander's file by moving it into one of the eight storage slots on the right of the screen using the controller.

To select a different commander move up and down the list of stored positions until the one you want is highlighted, and move it to the "Current Position". If you do not wish to save your position, then press LEFT from the current position.

When turning off the power to the Control Deck, you **must** hold down the RESET button. Failure to do so may result in loss of your stored commanders. The battery is used to retain commanders for five years, but conditions under which the Game Pak is kept (such as exposure to high temperatures) may shorten the battery's life.



Stored Positions Icon



Change Name Icon



Buying Extra Ship Equipment

Select and activate the "Equip Ship" icon. This mode connects directly with the space station's computer network which will immediately arrange fitting of any item. Fuel is also bought here. Items fitted here may not be sold again since they become a part of your ship, so choose carefully!

Choose the item you would like to buy, and press button A to buy it. You will only be allowed to buy an item if you have enough cash, and if you have room for it. When buying fuel, hold down button A until you have all the fuel that you want.

When buying lasers, a list of different directions will appear, as in the picture on the right. These correspond to the different combat views. If you choose a direction in which you already have a laser, then that laser is replaced by the new one and its cost refunded to you.

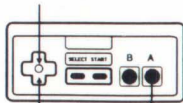
Higher Tech. Level worlds have more equipment available on them than lower levels. The Tech Level of a world is listed on the "Data on System" page.

Ship Equipment available
at Zaonce



Equip Ship Icon

Move up one item



Move down one item

Buy item

Selecting a view for a laser



Advanced Combat

Missiles

In addition to lasers, the Cobra comes with three missiles, and may carry up to four. To fire a missile, it must first be given a target. To do this select and activate the "Arm Missile" icon. This will cause one of the missile indicators to flash, and a yellow targeting square to flash in the middle of the gun sight.

Now turn your Cobra until the object you wish to fire the missile at is centred in your sights. When this happens the targeting square will stop flashing and the "Fire Missile" icon will appear. If you targeted the missile at the wrong object by mistake then activating "Arm Missile" again will disarm it.

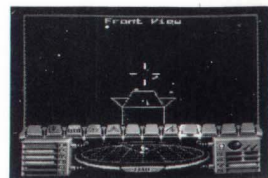
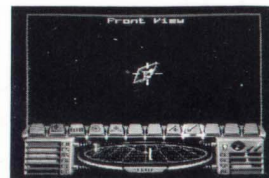
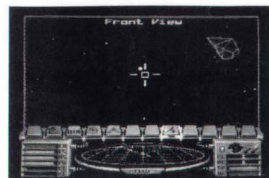
To fire the missile select and activate the "Fire Missile" icon. You do not need to be pointing at the object for this. The missile will then try to destroy its target, but may be shot down, or destroyed with ECM, or may run out of fuel if the target was too far away. Remember to use missiles wisely as they will cost 30 Credits to replace.



Arm Missile Icon



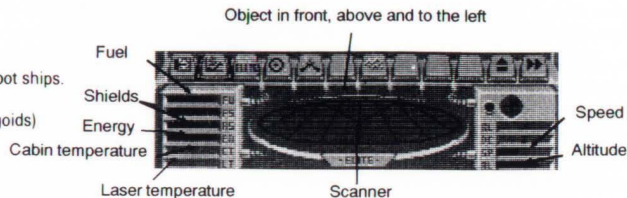
Fire Missile Icon



Using the Scanners

Your scanners show where other objects are relative to you, and help to find objects which are off the screen. Your ship is always at the centre of the scanner area, and other objects are colour coded according to their type.

- Yellow - ships
- Blue - junk (barrels, debris and asteroids)
- White - missiles, thargoid robot ships.
- Green - large objects (space stations, thargoids)



ECM

ECM (Electronic Counter Measures) is used to destroy all missiles in the vicinity and is activated using the "ECM" icon. Any ship can have ECM but most cannot afford it. The ECM field causes a zig-zag effect on the display. This happens even if it was the ECM of another ship.



ECM Icon

Fuel Scoops

Fuel Scoops enable the Cobra to skim hydrogen fuel off the surface of the sun. They activate automatically, and a message is displayed to show they are working. They can also be used to scoop up cargo canisters and other debris. This is done by flying at one so that it passes just between the view screen. The item a canister is briefly printed up, but beware since it is possible to pick up illegal goods like this.

Extra Energy Unit

This allows the Cobra's energy banks and shields to recharge more rapidly.

Pulse Lasers

One set is fitted to the front view of the Cobra Mk III as standard. They automatically cut off when they have overheated, and will soon cool down.

Beam lasers

These are powerful lasers which fire continuously. They use more power than a pulse laser and overheat more quickly.

Military Lasers

A more powerful version of the beam laser, originally designed for military use.

Mining Lasers

A special high power pulse laser. Not much good for combat since they take a long time to charge up, but they reduce asteroids to usable fragments of minerals which can be scooped up with Fuel Scoops. Good for use in Left or Right views.

Escape Capsule

A life support pod, often seen ejecting from stricken craft during a battle. This carries a pilot in suspended animation to the nearest space station. It also includes an insurance policy which will replace the pilot's ship with a new one. All cargo is lost, and the escape capsule is not replaced. This is activated using the "Escape Capsule" icon.



Escape Capsule Icon

Energy Bomb

Use with care, since it destroys all smaller ships (not Thargoids or space stations) in the vicinity, except the ship using it. This only works once, then a new one can be bought. It is activated using the "Energy Bomb" icon.



Energy Bomb Icon

Advanced Interstellar Navigation

Galactic Map

You have already seen how to make hyperspace jumps. To plan over a larger distance use the Galactic Map. Get the Local Map on the screen (as on page 6), then select and activate the "Map" icon again. This will give a display like that one the right. Now switch between "Data on System" and this map to plan your route.

Galactic Hyperspace

This is a one-use hyperspace drive which jumps the Cobra to a different galaxy. If has a built-in power pack so does not use hyperspace fuel.

Docking Computers

This allows automated docking without paying the 5 Credits charged for use of the space station's Docking Computer.

Data on System

The economy type controls the prices of trade items. The government type gives an idea of the amount of piracy (see right) - stricter government mean less piracy.



Safest ↑ Corporate State
Democracy
Confederacy
Communist
Dictatorship
Multi-Government
Most ↓ Feudal
Piracy Anarchy



Galactic
Hyperspace
Icon



Interstellar Trading

Choice of trade items is important if a profit is to be made. Food will be cheaper on a Poor Agricultural world than a Rich Industrial because there is plenty where it is grown. Computers will be cheaper on an Industrial world because they are made there. See page 5 for operating your Cobra's trading facility.

Trade Item	Place to buy	Ave. Price	Trade Item	Place to buy	Ave. Price
Food	Agricultural	4.4/tonne	Machinery	Industrial	56.4/tonne
Textiles	Agricultural	6.4/tonne	Alloys	Agricultural	32.8/tonne
Radioactives	Agricultural	21.2/tonne	Firearms*	Industrial	70.4/tonne
Robot slaves*	Agricultural	8.0/each	Furs	Agricultural	56.0/tonne
Beverages	Agricultural	25.2/tonne	Minerals	Agricultural	8.0/tonne
Luxuries	Industrial	91.2/tonne	Gold	Anywhere	37.2/kg
Rare Species*	Agricultural	114.8/tonne	Platinum	Anywhere	65.2/kg
Computers	Industrial	84.0/tonne	Gem Stones	Anywhere	16.4/g

* These items are illegal, but are included on the trading network by unscrupulous dealers. Trading in these effects your legal rating if you are seen when launching or docking, and may cause the GalCop police force to chase you. Some experienced pilots with tough ships have found this a good way to earn money as the price of illegal items varies a great deal. Alien items may sometimes be scooped up after doing battle with Thargoids.

Large Cargo Bay

This is modification to the Cobra to increase its cargo hold size to 35 tonnes.

Other Controls

When you press START to pause, a different row of icons appear, like those below. These allow you to restart and to change some of the controls. To continue, press START again, and the display will return to the way it was before it was paused.

Activating the "Restart" Icon abandons the current position, and returns to the space craft recognition display.



Restart Icon

Two pilots may control the Cobra together. The "One Pilot" icon shows that the controls are currently set for one pilot. Activate this icon to change to two pilots. One controller is used to fly the ship while the other works the weaponry. This mode may also be entered by pressing a button on the second controller when the space craft recognition is displayed.



One Pilot Icon



Two Pilot Icon

Music may be turned on and off by activating the "Music" icon. Sound effects may also be turned off, by activating the "Sound" icon.



Music Icon



Sound Icon

Activating the "Direction" icon changes the way the controller is used to fly the Cobra, so that UP is climb and DOWN is dive.



Direction Icon

Activating the "Damping" icon stops the Cobra returning to straight and level flight when no button on the controller is pressed.



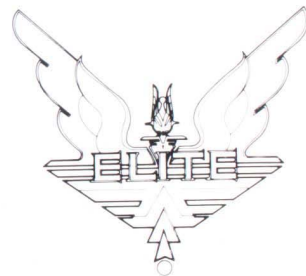
Damping Icon

Observer's Guide to Ships in Service

It is vitally important that a pilot can instantly recognise the different ship types likely to be encountered. This is partly because when in space it is difficult to tell whether a ship is very big but a long way away or small and close. All good pilots know it is foolish to take on a ship against which they have little or no chance of surviving. Unfortunately lawlessness is rife in many systems so all precautions should be taken.

Pirates will destroy a ship in the hope a few sturdy cargo canisters will survive the explosion. They will then use their Fuel Scoops to pick them up, and sell them at other worlds. Occasionally a pirate will be caught by the galactic police force GalCop selling scooped up illegal goods, but are rarely caught in the act of piracy. This is why GalCop offer rewards for pilots who destroy pirate ships. There are many of these "Bounty Hunters" around, and they will only attack ships whose legal ratings are not "Clean". There are other ships not on this list, since the Elite Pilots Federation does not have complete information on them.

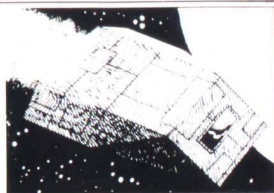
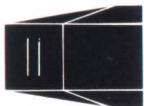
A small reward is paid for clearing the space lanes of asteroids, since ships are occasionally damaged by collisions with them. Care should be taken since asteroids are a favourite hide-out for "Rock Hermits", solitary souls (often human) who live in hollowed out asteroids, and will not take kindly to being shot at.



See enclosed Wall Chart

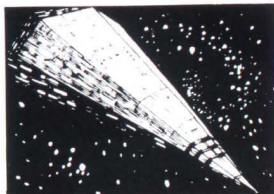
Adder

Usage smugglers and pirates
Dimensions 45/8/30 ft
Cargo capacity 2 tonnes
Armaments Lasers
Maximum speed 0.24 lightspeed
Crew number 2
Hyperspace capability Yes



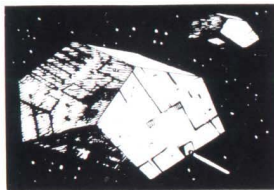
Anaconda

Usage large freighter
Dimensions 170/60/75 ft
Cargo capacity 750 tonnes
Armaments Lasers, 8 missiles
Maximum speed 0.14 lightspeed
Crew number 40
Hyperspace capability Yes



Asp

Usage naval vessel and lone pirates
Dimensions 70/20/65 ft
Cargo capacity None
Armaments Lasers, 1 missile
Maximum speed 0.4 lightspeed
Crew number 2
Hyperspace capability Yes



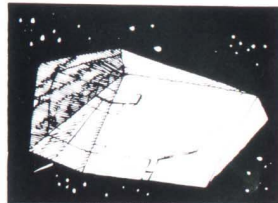
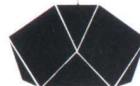
Boa Class Cruiser

Usage freighter
Dimensions 115/60/65 ft
Cargo capacity 125 tonnes
Armaments Lasers, 6 missile
Maximum speed 0.24 lightspeed
Crew number 15
Hyperspace capability Yes



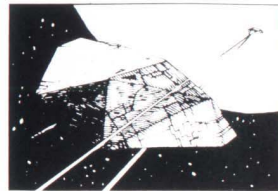
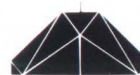
Cobra Mk I

Usage trader and pirates
Dimensions 55/15/70 ft
Cargo capacity 10 tonnes
Armaments Lasers, 2 missile
Maximum speed 0.26 lightspeed
Crew number 1
Hyperspace capability Yes



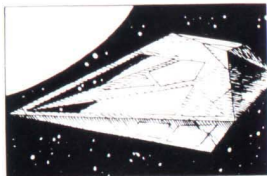
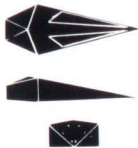
Cobra Mk III

Usage lone pirates, bounty hunters, traders
Dimensions 65/30/130 ft
Cargo capacity 20 or 35 tonnes
Armaments Lasers, 4 missile
Maximum speed 0.30 lightspeed
Crew number 1 or 2
Hyperspace capability Yes



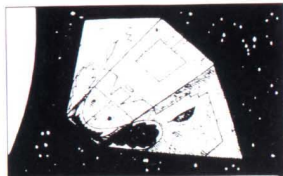
Fer-de-Lance

Usage lone pirates and bounty hunters
Dimensions 85/20/45 ft
Cargo capacity 15 tonnes
Armaments Lasers, 2 missile
Maximum speed 0.30 lightspeed
Crew number 2 or 3
Hyperspace capability Yes



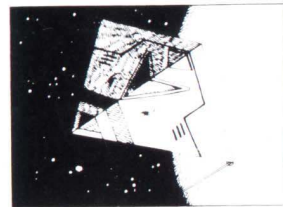
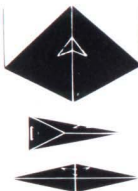
Gecko

Usage pirates
Dimensions 55/15/70 ft
Cargo capacity 3 tonnes
Armaments Lasers, 1 missile
Maximum speed 0.30 lightspeed
Crew number 1
Hyperspace capability No



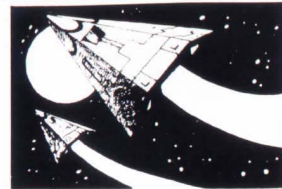
Krait

Usage pirates
Dimensions 60/20/90 ft
Cargo capacity 2 tonnes
Armaments Lasers
Maximum speed 0.30 lightspeed
Crew number 1
Hyperspace capability No



Mamba

Usage pirates
Dimensions 55/12/65 ft
Cargo capacity 4 tonnes
Armaments Lasers
Maximum speed 0.32 lightspeed
Crew number 1
Hyperspace capability No



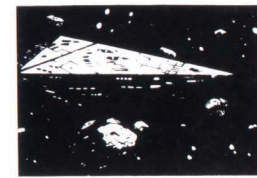
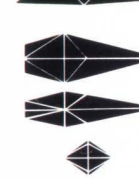
Moray Star Boat

Usage pirates, partially non-human
Dimensions 60/25/60 ft
Cargo capacity 7 tonnes
Armaments Lasers
Maximum speed 0.30 lightspeed
Crew number 1
Hyperspace capability Yes



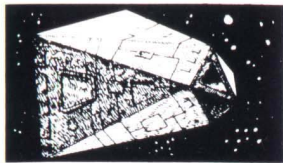
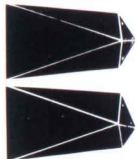
Python

Usage large freighter and lone pirates
Dimensions 130/40/80 ft
Cargo capacity 100 tonnes
Armaments Lasers, 6 missiles
Maximum speed 0.20 lightspeed
Crew number 20
Hyperspace capability Yes



Orbital Shuttle

Usage trade between space-station & planet
Dimensions 35/20/20 ft
Cargo capacity 30 tonnes
Armaments None
Maximum speed 0.08 lightspeed
Crew number 6
Hyperspace capability No



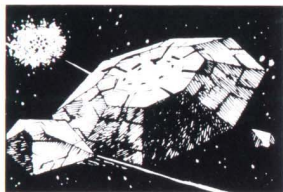
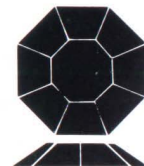
Sidewinder Scout Ship

Usage naval scout and pirate
Dimensions 35/15/65 ft
Cargo capacity None
Armaments Lasers
Maximum speed 0.37 lightspeed
Crew number 1
Hyperspace capability No



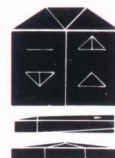
Thargoid Invasion Ships

Usage deadly alien ships seen occasionally
Dimensions unknown (but large)
Cargo capacity unknown
Armaments Lasers, robot ships
Maximum speed unknown
Crew number unknown
Hyperspace capability Yes



Transporter

Usage trade between space-station & planet
Dimensions 35/10/30 ft
Cargo capacity 12 passengers or 6 tonnes
Armaments None
Maximum speed 0.10 lightspeed
Crew number 2
Hyperspace capability No



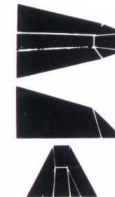
Viper (GalCop Police Ship)

Usage police
Dimensions 55/80/50 ft
Cargo capacity 2 passengers
Armaments Lasers, 1 missile
Maximum speed 0.32 lightspeed
Crew number 1
Hyperspace capability No



Worm Class Landing Craft

Usage carried by large ships as life-boat
Dimensions 25/12/25 ft
Cargo capacity None
Armaments None
Maximum speed 0.11 lightspeed
Crew number 2
Hyperspace capability No



WARNING

DO NOT USE WITH FRONT OR REAR PROJECTION TV

Do not use a front or rear projection television with your Nintendo Entertainment System™ ("NES") and NES games. Your projection television screen may be permanently damaged if video games with stationary scenes or patterns are played on your projection television. Similar damage may occur if you place a video game on hold or pause. If you use your projection television with NES games, Nintendo will not be liable for any damage. This situation is not caused by a defect in the NES or NES games; other fixed or repetitive images may cause similar damage to a projection television. Please contact your TV manufacturer for further information.